



**San Diego County
Water Authority**

Our Region's Trusted
Water Leader

Regional Conveyance System Study Borrego Community Forum

November 5, 2020

Agenda

Welcome Moderator Remarks: Kelly Rodgers, director of the Colorado River program, San Diego County Water Authority 5 Minutes

Background: Dan Denham, deputy general manager, San Diego County Water Authority 5 Minutes

Regional Conveyance System Study Overview: Kevin Davis, vice president, Black & Veatch Corporation 15 Minutes

Borrego Input: 15 Minutes
Françoise Rhodes, executive director, Borrego Springs Chamber of Commerce
David Garmon, president, Tubb Canyon Desert Conservancy
Dick Troy, board president, Anza-Borrego Foundation

Q&A 50 Minutes



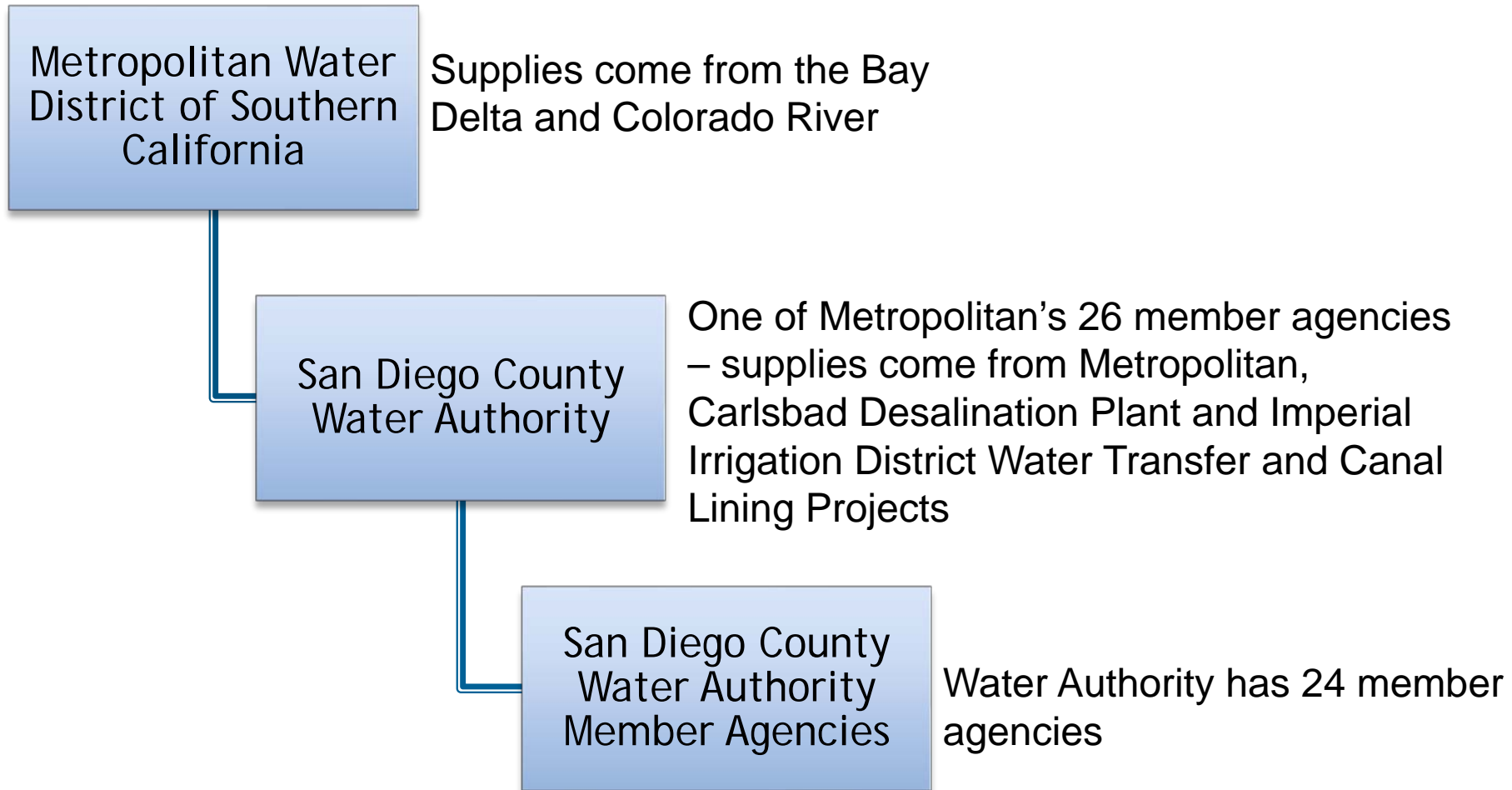
**San Diego County
Water Authority**

Our Region's Trusted
Water Leader

Background

Who is the Water Authority?

- 1944 - Wholesale water agency serving San Diego County



QSA Conserved Water Sustains San Diego County



- More than half of county's water is from 2003 QSA conservation agreement
- Agreement helps sustainably manage Colorado River
- QSA supplies are complementary to local supplies; both are necessary
- QSA supplies are lowest-cost source and highly reliable
- Pay MWD to deliver that water for Water Authority

Water Authority Board Must Make Long-Term Decision

- IID conserved water transfer initial term ends in 2047 with potential extension
- Exchange Agreement with MWD ends in 2047
- Water Authority Board must decide now in order to be prepared for and protect future generations

Current Two-Phase Study

Water Authority Board directed an incremental approach on studying options for delivery of QSA supplies

- Phase A
 - Focus on engineering and costs
 - Identifying technical and financial fatal flaws
 - Offramp at end
- Phase B
 - Detailed economic analysis
 - Stakeholder outreach and dialogue with potential partners
 - Offramp at end

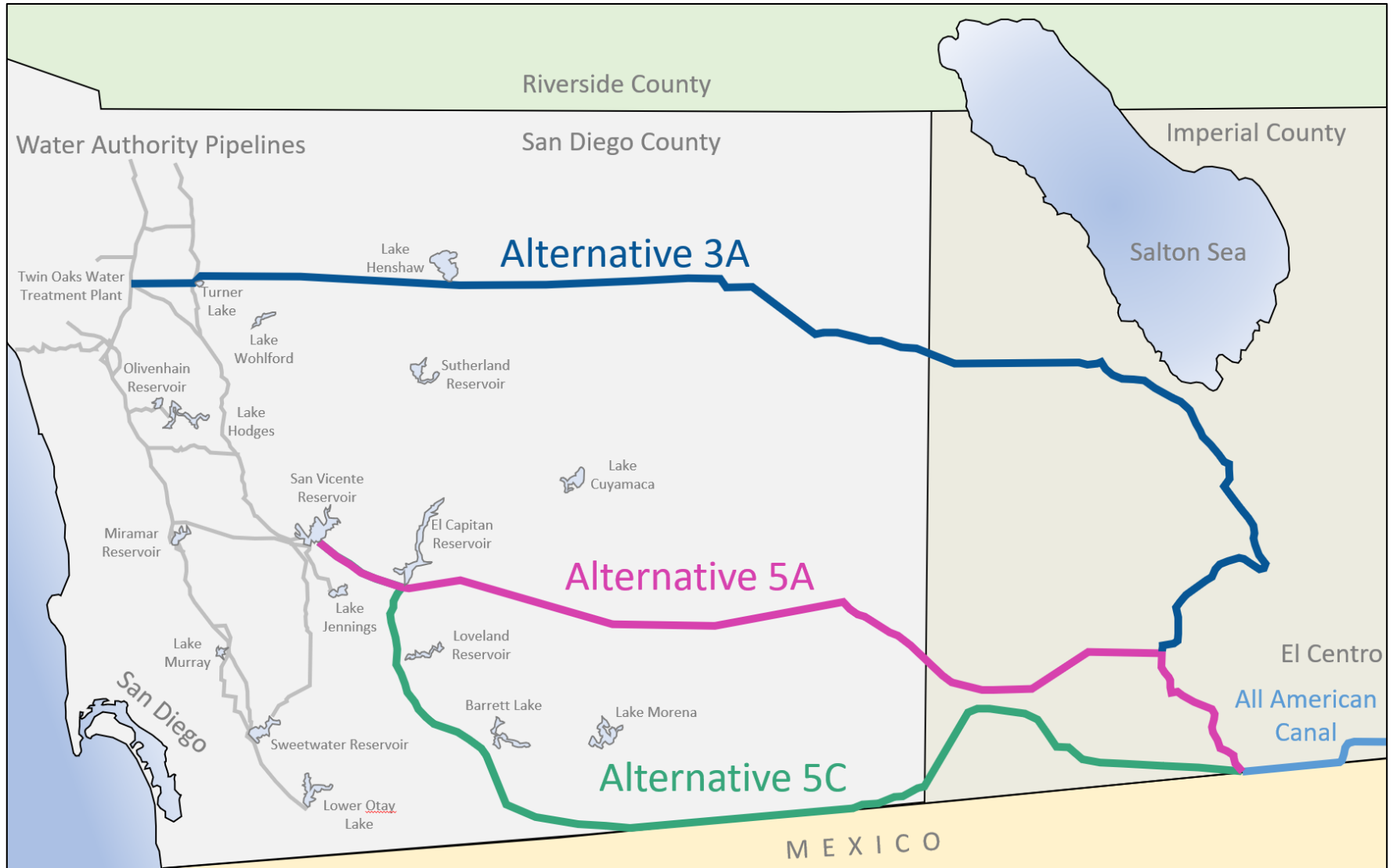


**San Diego County
Water Authority**

Our Region's Trusted
Water Leader

RCS Study Update

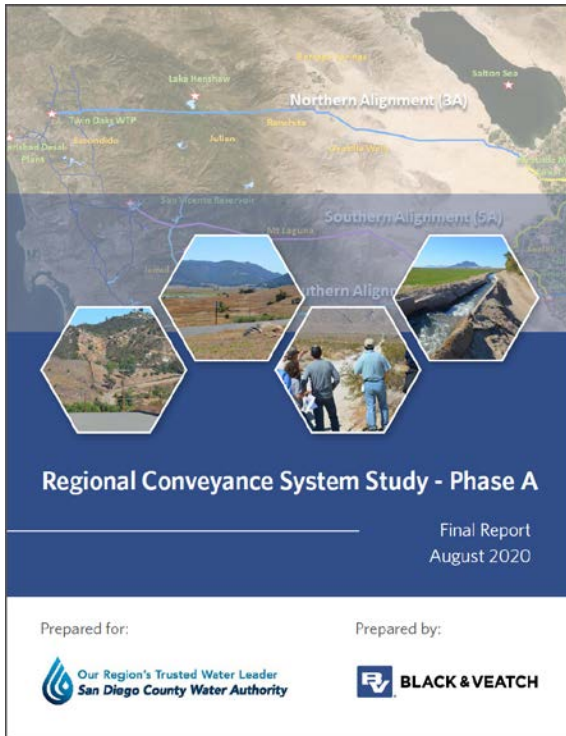
Three Routes Studied in Phase A



Phase A Objectives

- **Evaluate conceptual routes** - in feasibility study stage, nothing designed - great deal of flexibility
- **Evaluates Feasibility of Alternative 3A** - up to the same level as 5A and 5C, the two southern alternatives
- **Fatal Flaws** - Determine any technical or financial fatal flaws. Others to be examined during CEQA later
- **Screening** - Screen three alignments down to two
- **Identifies Potential Partnerships** - Perform high-level assessment of potential partnership opportunities that could bring regional benefits
 - Partnerships not included in baseline cost assessment

Phase A Findings



- QSA water needed
- 3A, 5A & 5C technically viable
- 3A & 5A economically competitive
- Can be integrated into Water Authority system
- Several potential partnerships

Alternative 3A - Key Facilities Needed



47 Miles of Canal



39 Miles of Buried Pipelines



3 Pump Stations



47 Miles of Tunnels

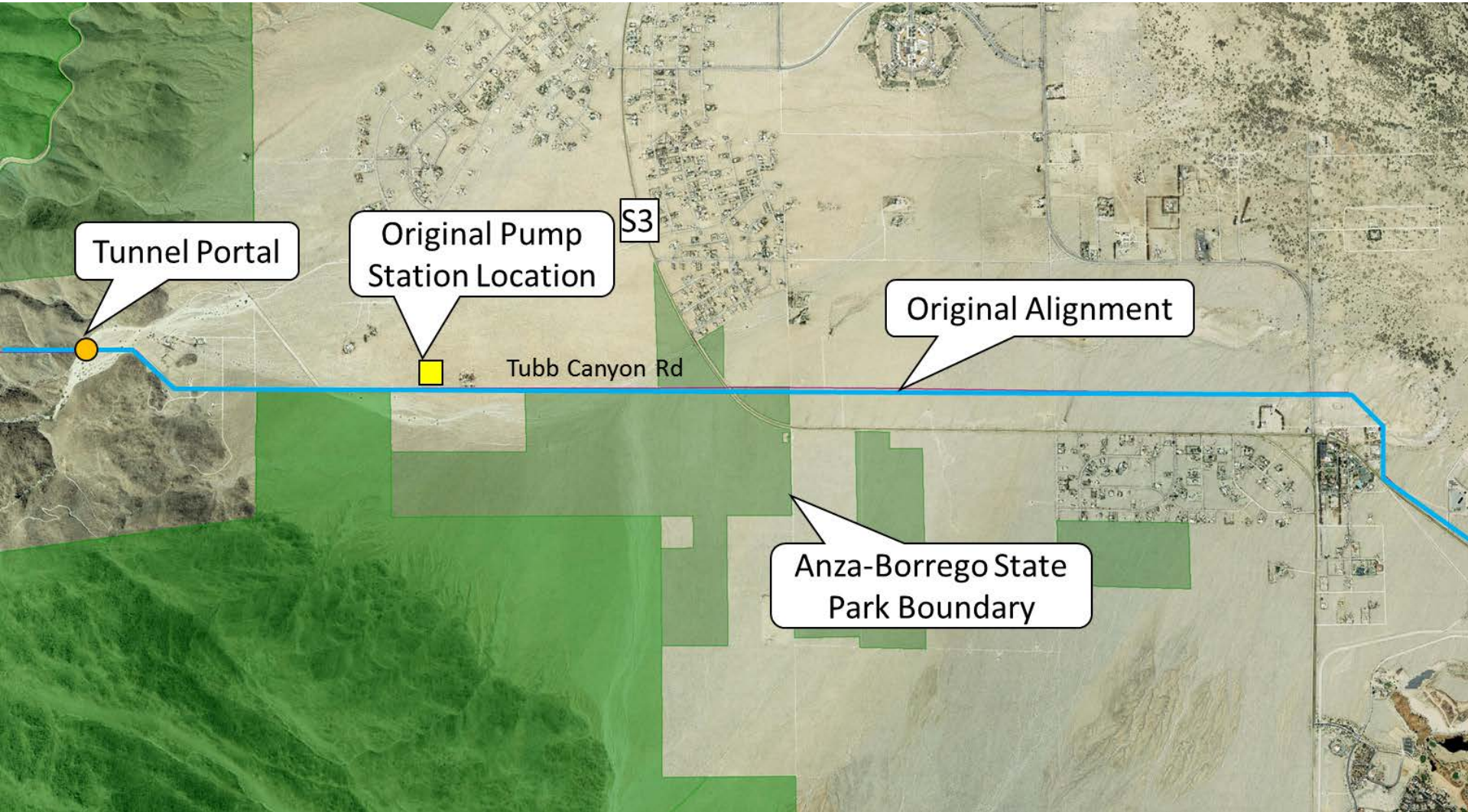


Treatment Plant

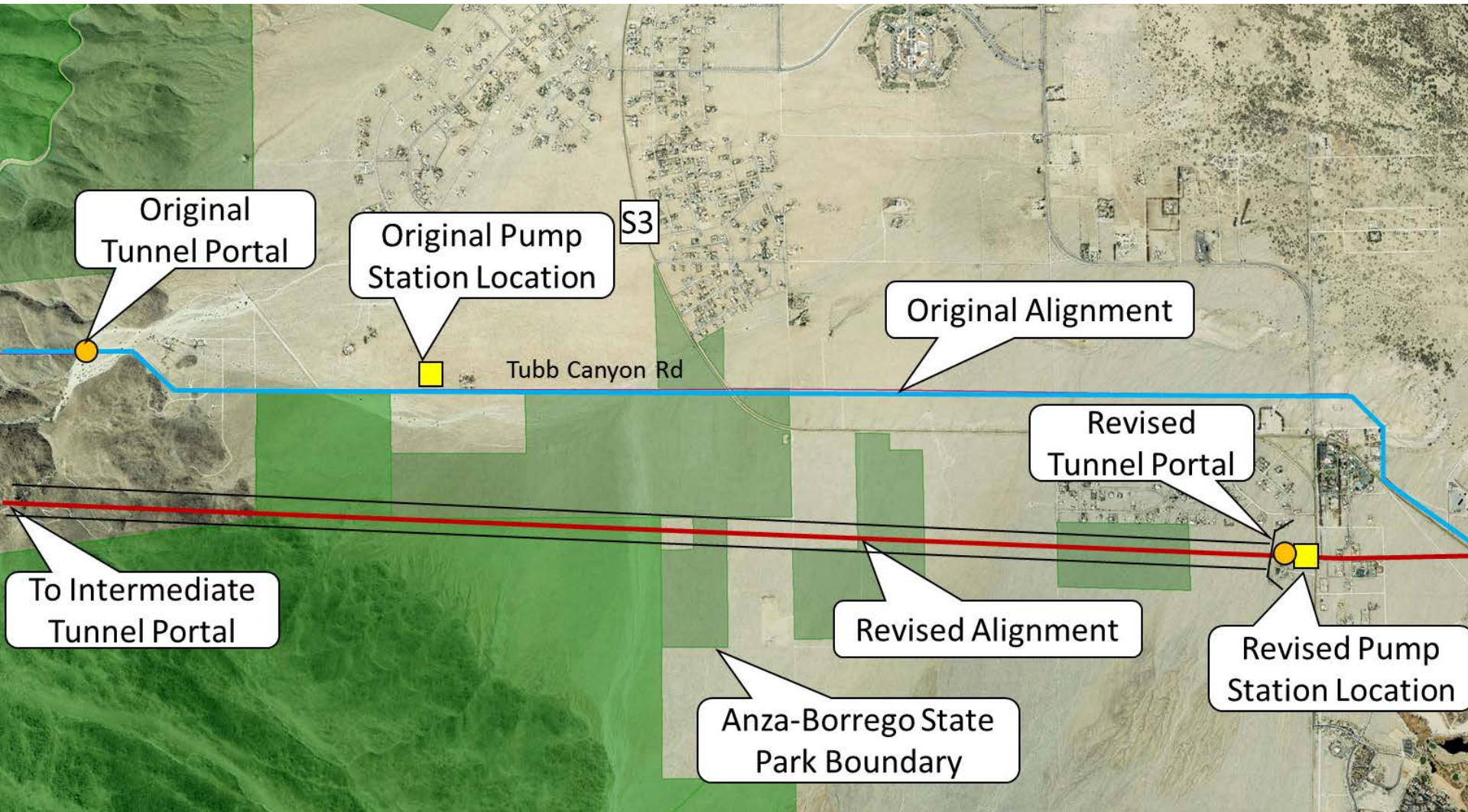


Surface Storage

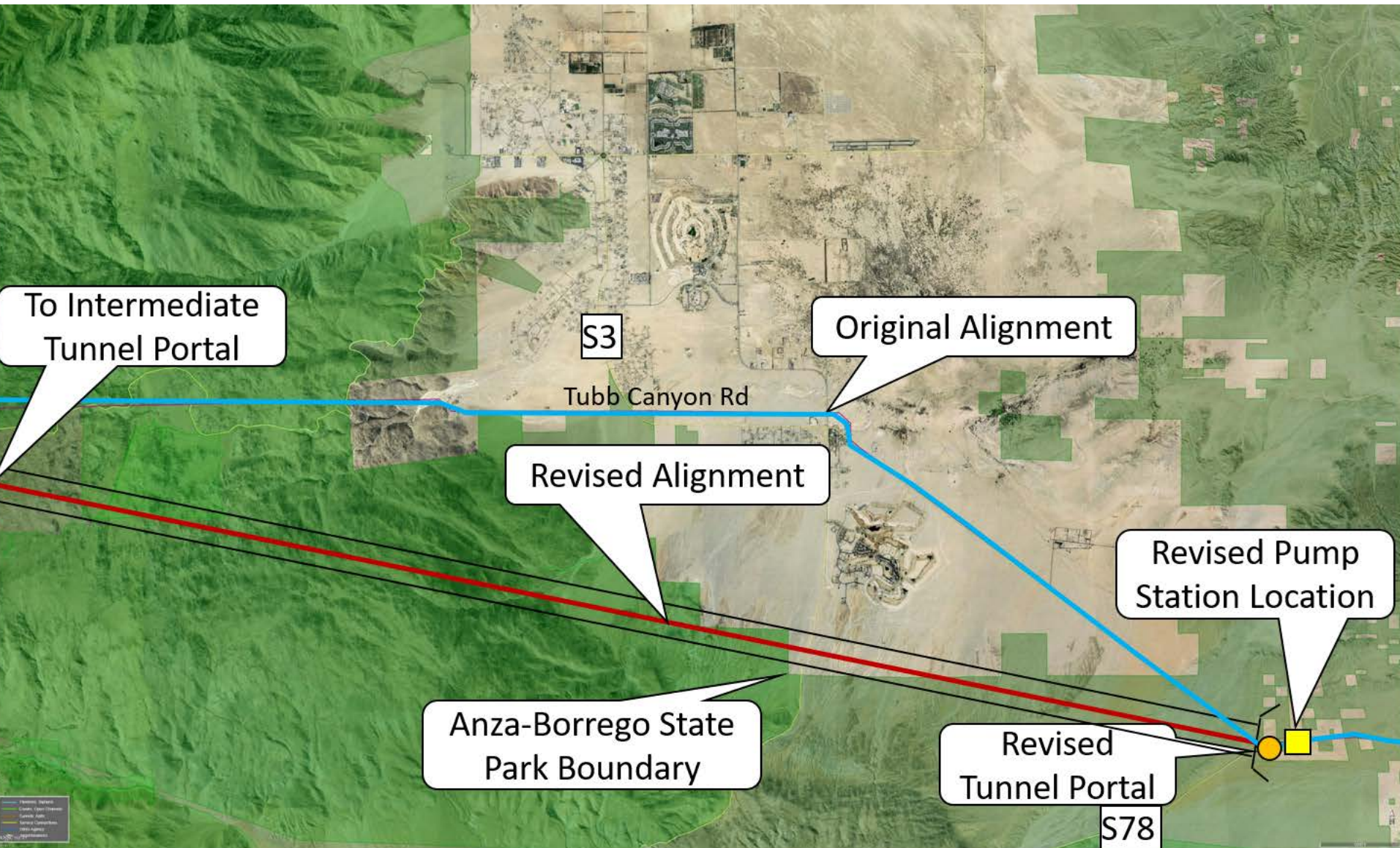
Alternative 3A - Borrego Springs Area (Base)



Alternative 3A - Borrego Springs Area (Option)



Alternative 3A - Borrego Springs Area (Option)



Tunnels



Considerations

- Construction activities (Material excavation, groundwater)
- Costs (Capital, OM&R)
- Environmental (focus on construction)

Alternative 3A - Potential Partnerships

- **Identification** - High level only "*in the neighborhood*"
- **Borrego Springs** - Potential Conduit for Water
 - Third Party - Not QSA Water
 - Sizing - Could provide similar to over-draught of 20,000 AF
 - No Aquifer Storage Considered in RCS Study, Phase A
 - Not economically attractive
 - Sufficient storage available in San Diego County for QSA




Environmental Concerns - ABDSP

- *No Preferred Alternative* has been selected
- **RCS Study, Phase A**
 - Only obvious environmental fatal flaws assessed.
 - Outlined the environmental process
- **Environmental Constraints Analysis** – Future phases
- **CEQA/NEPA**
 - Future phases
 - Will be final authority on fatal flaws

3A - Borrego Concerns and Responses

- Impact to ABDSP, Cultural Resources, *Bighorn Sheep*
- Tunneling impacts on groundwater, surface streams, and wildlife
- Tunneling debris transportation
- Impact to Geo-tourism, temporary construction and long term
 - Mitigation measures can be implemented to reduce impact



CEQA/NEPA will be carefully followed in future phases if project moves forward

3A - Borrego Concerns and Responses

■ Concerns If Partnership is Developed

- Structural integrity of the Borrego Springs Sub-basin
 - Additional studies will be done to assure structural integrity is maintained
- Water quality impacts of stored water in Borrego Springs Sub-basin
 - Water treatment to acceptable levels may be needed

Partnerships

Only work if both parties benefit

■ Tunnel Crossing Active Faults

- Special considerations would be made to mitigate potential impacts, if project moves forward

■ No outreach has been done in Borrego

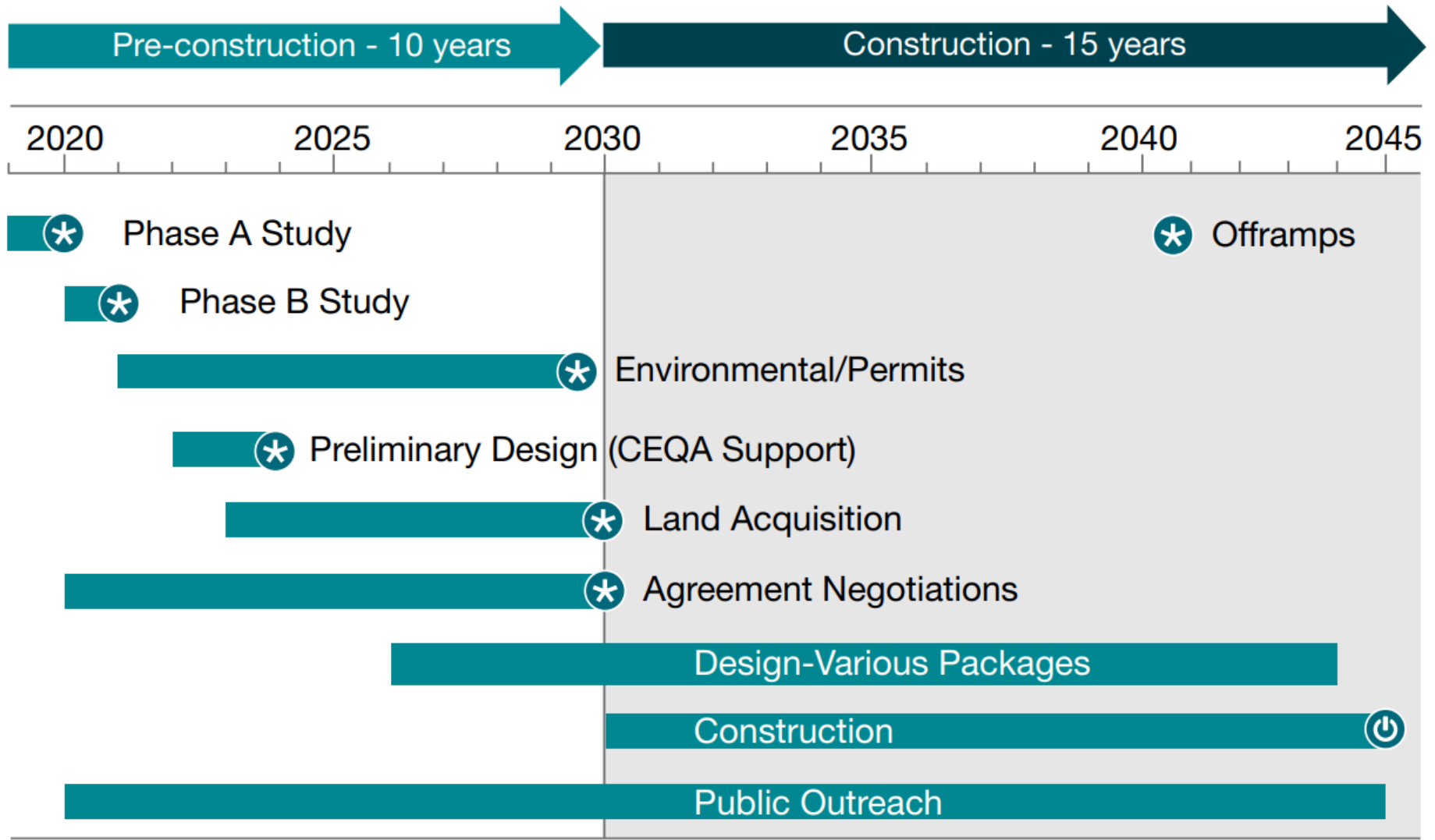
- Part of Phase B scope, if authorized

Potential Partnerships for Water Resiliency

- Regional operational surface and groundwater storage
- Projects at the Salton Sea
- Renewable energy generation and integration
- Bi-national projects
- Projects with tribes
- Public-private
- Federal, state
- Local agencies including member agencies
- Others



Timeline



Next Steps

- November 19 Water Authority Board Action on Phase B
- Phase B focus - stakeholder outreach, dialogue with potential partners, economic analysis



**San Diego County
Water Authority**

Our Region's Trusted
Water Leader

Borrego Input

Francoise Rhodes, Executive Director





BORREGO SPRINGS & PROPOSED RCS

**J. David Garmon, M.D.
President, Tubb Canyon Desert Conservancy**

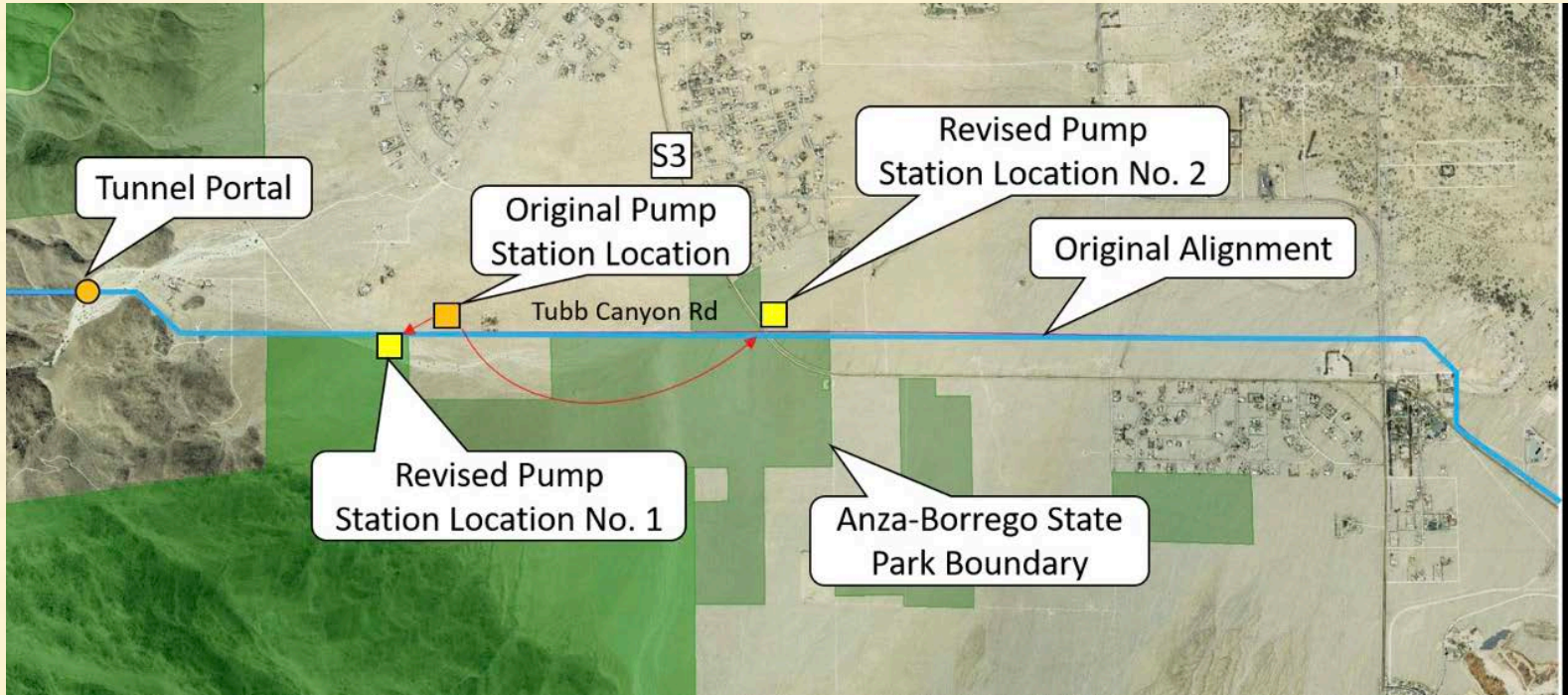


3A - NORTHERN ALIGNMENT

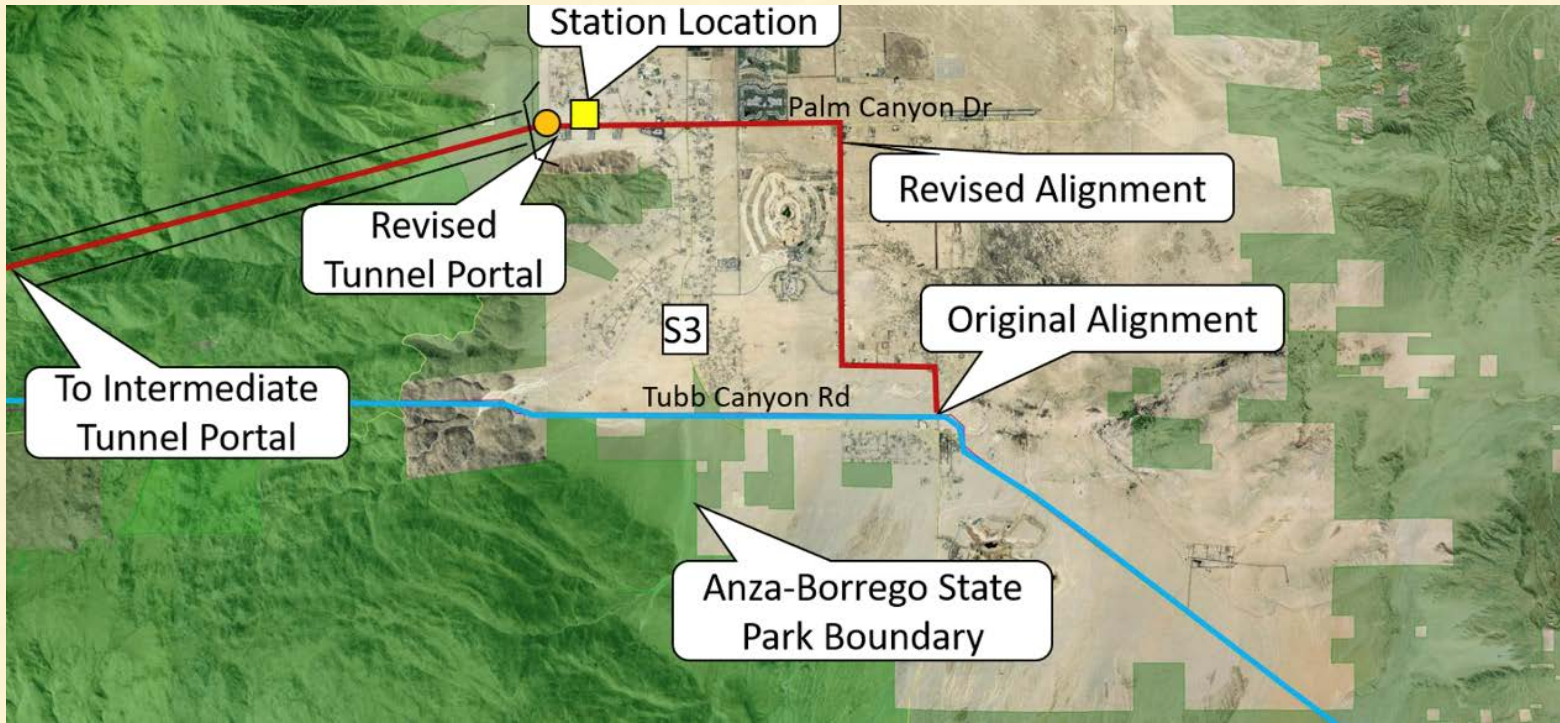
PIPELINE CONSTRUCTION TO ...



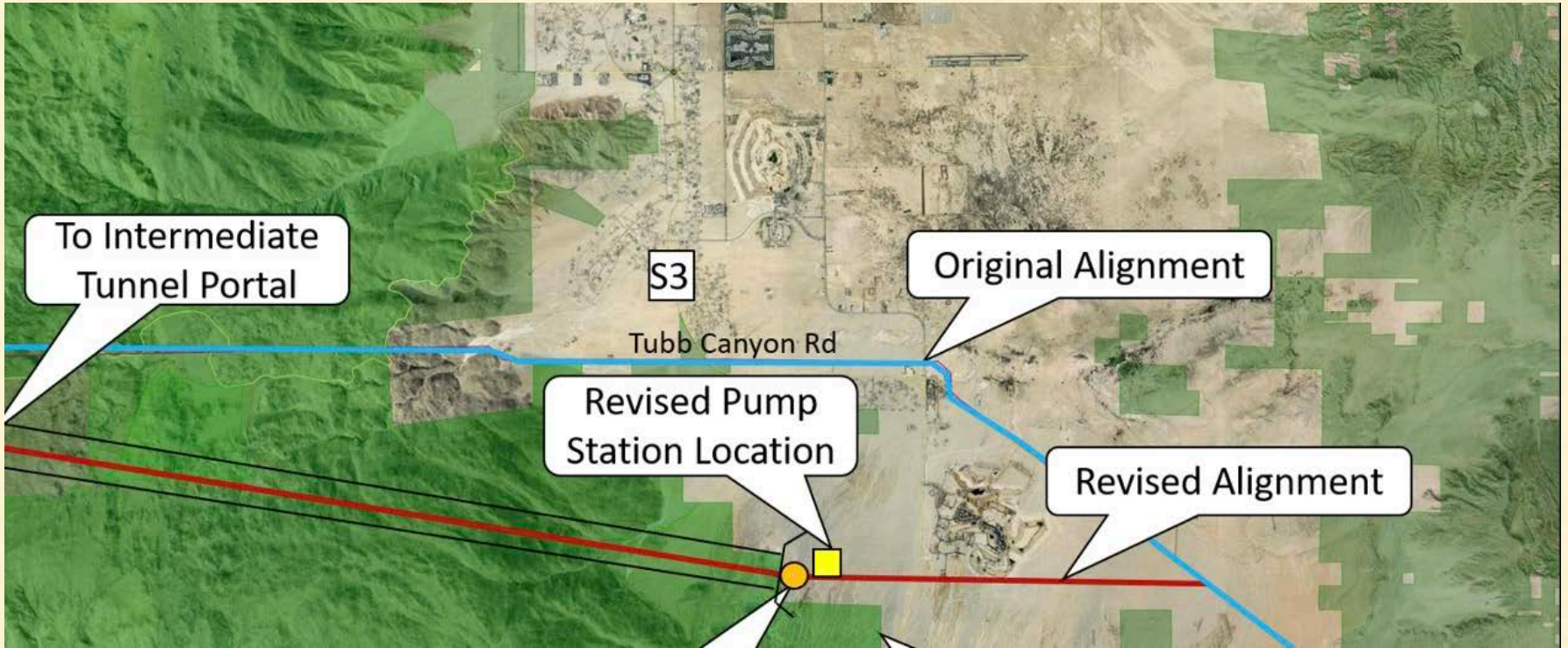
- Tubb Canyon?
- Up Palm Canyon Drive to the State Park Visitor Center?
- Glorietta Canyon?
- Between Rams Hill and Casa del Zorro?



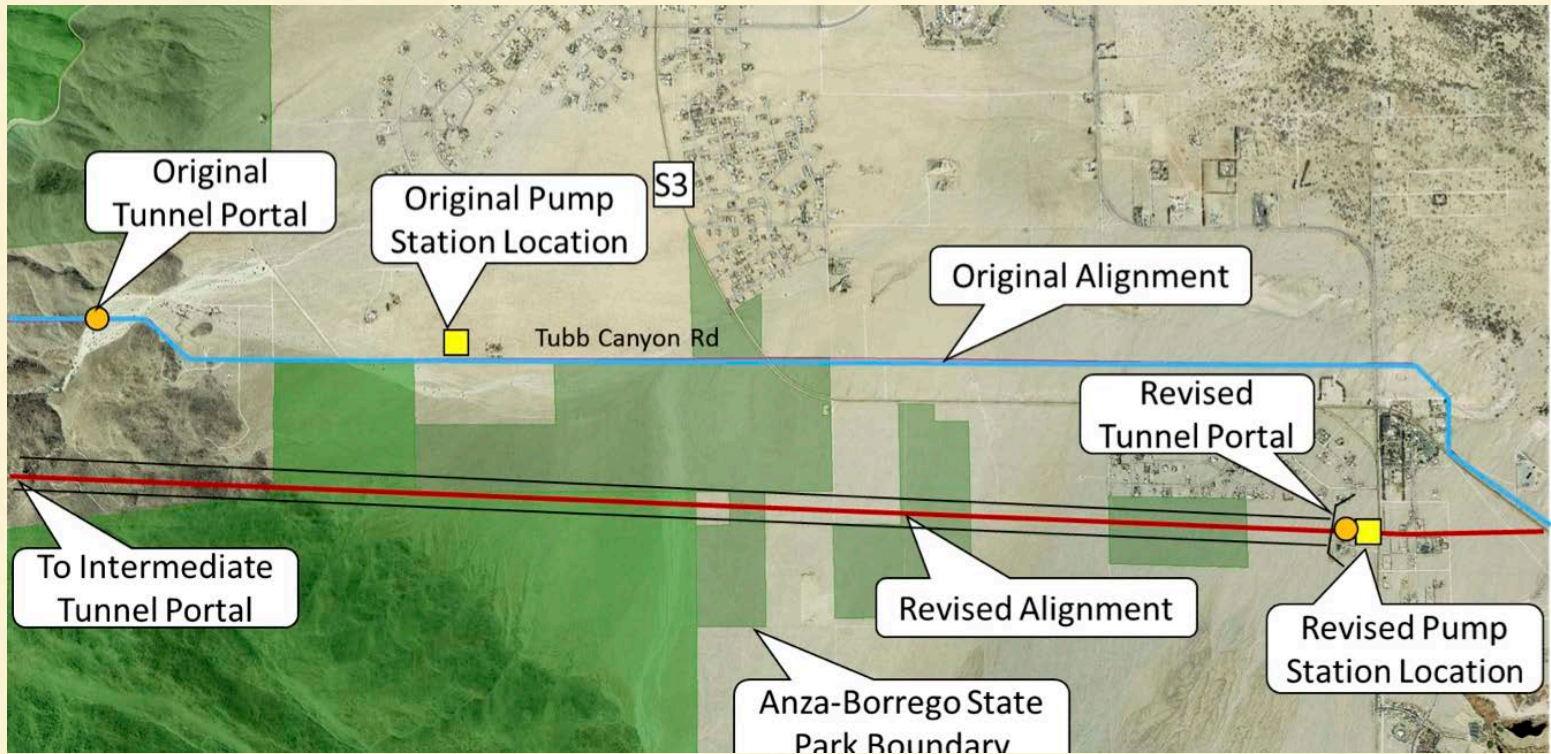
RCS TO TUBB CANYON



RCS TO PALM CANYON



RCS TO GLORIETTA CANYON



RCS TO RAMS HILL

PUMPING STATION (P3) FOR BORREGO



- 10 Acre Site
- Electrical Substation
- 4 Acre Forebay
- 4 12,500 Horsepower Engines
- Running Day and Night

NEW 230KV
POWERLINE
THROUGH THE
ANZA-BORREGO
DESERT STATE PARK



ROUTE 3A BENEFITS FOR BORREGO IRRIGATORS



- to provide a conduit to Borrego Springs from the Colorado River
- 20,000 acre-feet per year capacity turnout for Borrego Springs
- to use the water directly for either non-potable uses, or to send to new treatment facilities

ROUTE 3A COSTS TO BORREGO IRRIGATORS

- millions of \$\$ in annual charges for 20,000 acre-feet of Colorado River water
- multimillions of \$\$ for capital costs to transport Colorado River water from the turnout for conjunctive use with existing Subbasin plumbing system
- or multimillions in \$\$ for capital costs to transport Colorado River water for direct use by irrigators
- hundreds of thousands of \$\$ in annual O&M expenses for either transport option



ROUTE 3A EXTERNALITIES & DOWNSIDES



- many-years construction process and noise negatively impacts Borrego as a quiet desert resort destination
- large water use for construction process to reduce air quality degradation from blowing dust
- potential pollution of Subbasin groundwater
- potential for compromising Subbasin structural integrity depending on amount of storage and timing of withdrawals
- bifurcation of ABDSP assumed as a free \$\$ resource

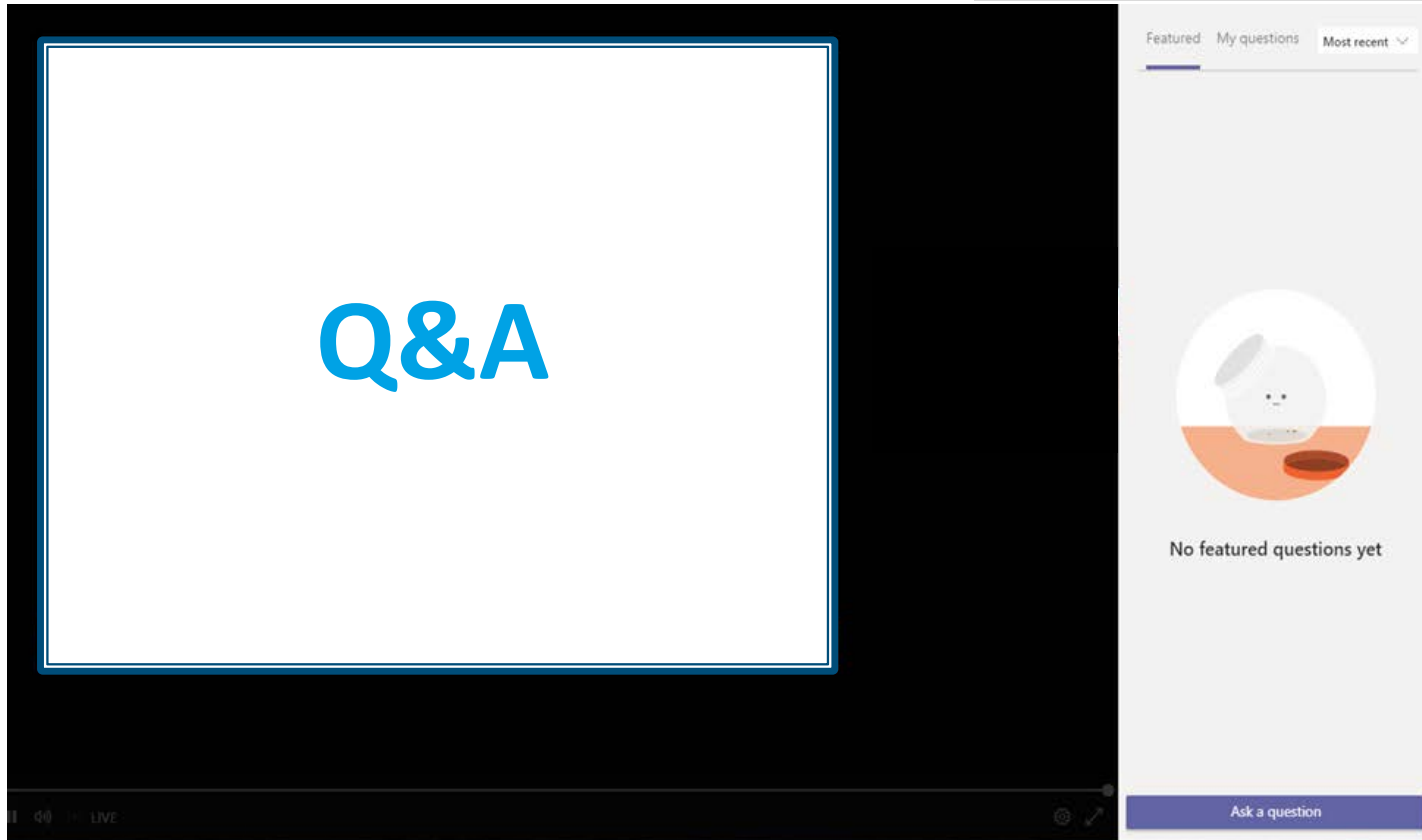


BORREGO FOR FUTURE GENERATIONS

- Dick Troy, board president, Anza-Borrego Foundation



Live Event Q&A



Click the question mark icon at the top right of your screen

Click here to submit a question

Include your name and affiliation with questions.

You can also email questions to sdcwa@sdcwa.org .