

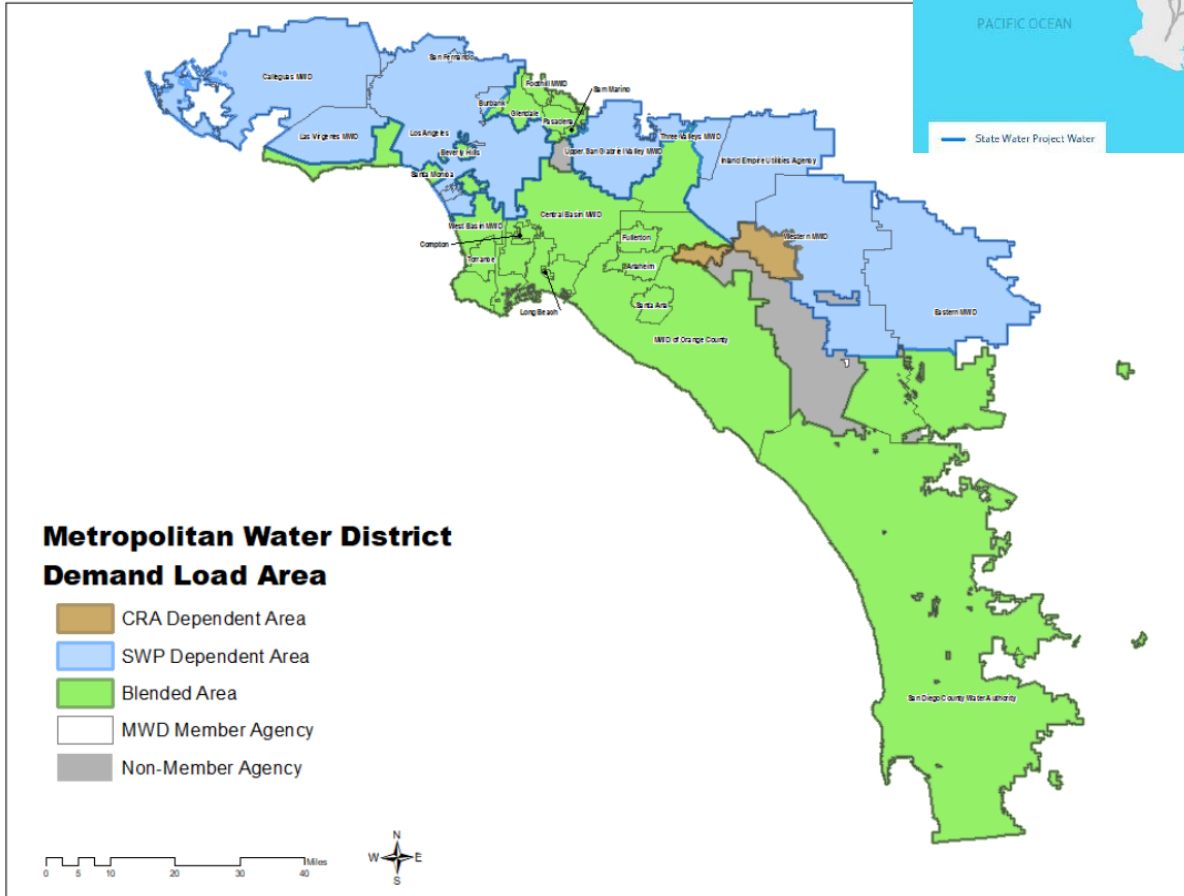


**San Diego County
Water Authority**
Our Region's Trusted
Water Leader

MWD's State Water Project Exclusive Areas

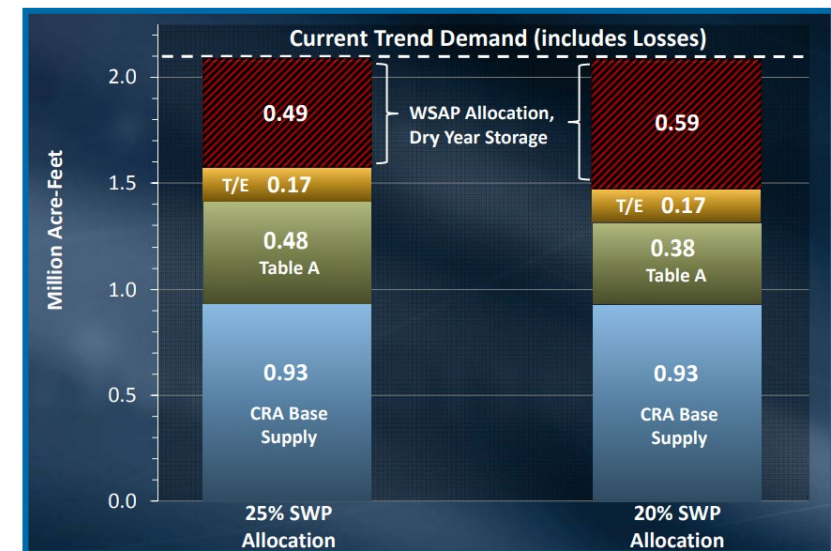
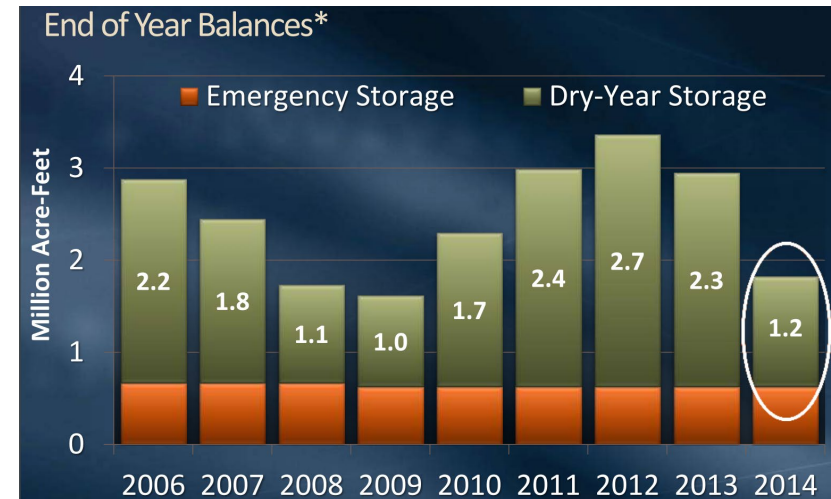
Amy Chen
Director of the MWD Program

SWP Exclusive Areas



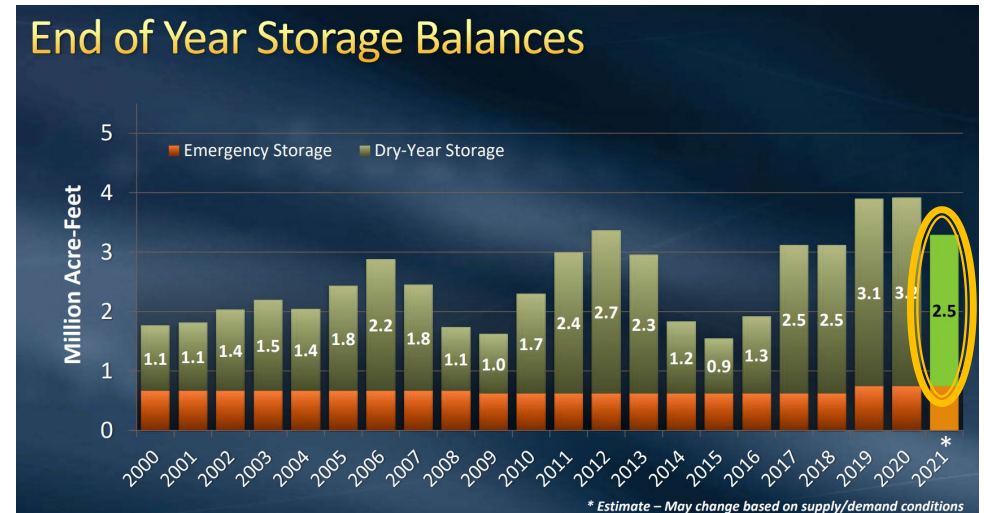
2012-16 Drought

- “SWP Exclusive Areas”
 - 2/13/2015 letter to State Board informing available storage “is not equally available” to all areas of MWD
 - Only 130,000 AF of 500,000 AF was available for SWP exclusive areas
- Low regional storage caused MWD to allocate water region-wide



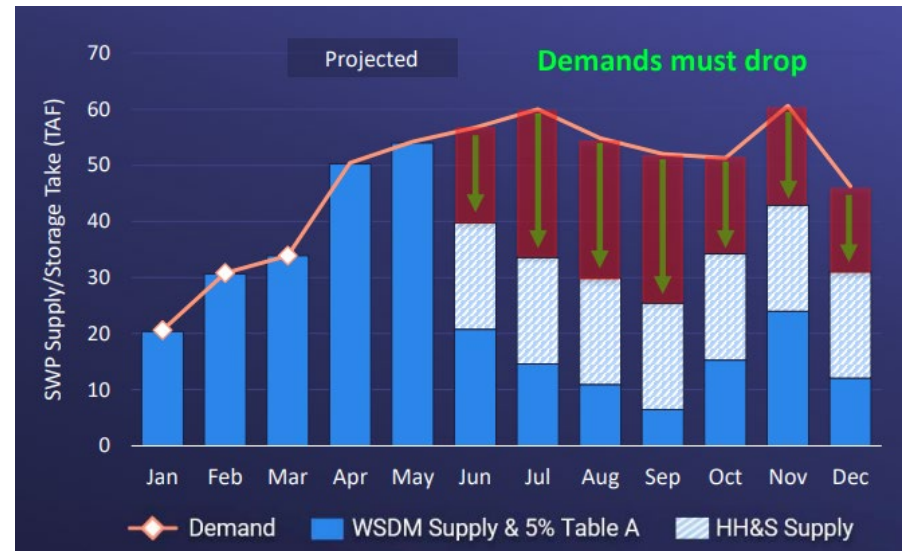
MWD Enters 2022 with 2.6 MAF Regional Storage

- Actions in 2021 & 2022 to address SWP exclusive needs
 - Reverse operations
 - Pump CR to SWP exclusive
 - Shift MA demands to CR
 - Water transfers/exchanges
 - Include Water Authority's Semitropic water/capacity
 - Infrastructure improvements/agreements to move CR/DVL water to SWP exclusive areas
- SWP at 15%
 - Sufficient to meet demands
- When reduced to 5%, only ~180 TAF stored water available

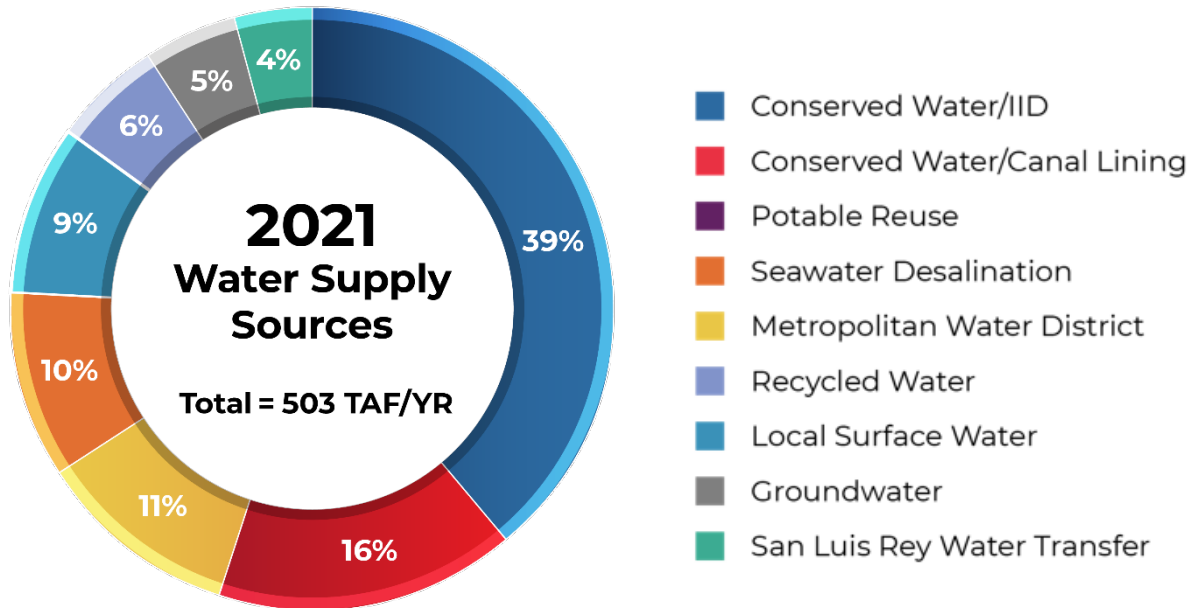
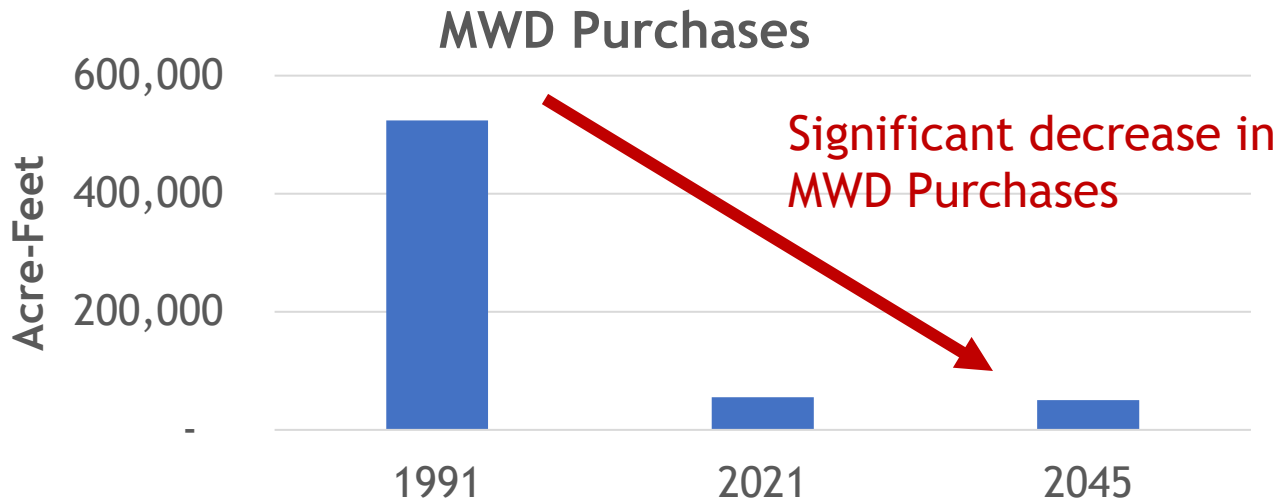


5% Allocation Insufficient to Meet SWP Exclusive Needs

- HH&S Deliveries
 - 55 gpcd
 - Insufficient to meet demand
- Emergency Water Conservation Program
 - One day a week irrigation, or
 - Allocation targets
 - \$2,000/AF penalty
 - More restrictions if demands not reduced



Water Authority is Protected: Reduced Bay-Delta Reliance



An aerial photograph of a large reservoir situated in a valley. The water is a deep blue color. The surrounding terrain is hilly and brownish, suggesting a dry climate. On the right side of the image, a large concrete dam is visible, with some buildings and infrastructure at its base. The word "Questions" is overlaid in the center of the image in a large, bold, blue font.

Questions