



**San Diego County
Water Authority**

Our Region's Trusted
Water Leader

Bay-Delta Update

Imported Water Committee

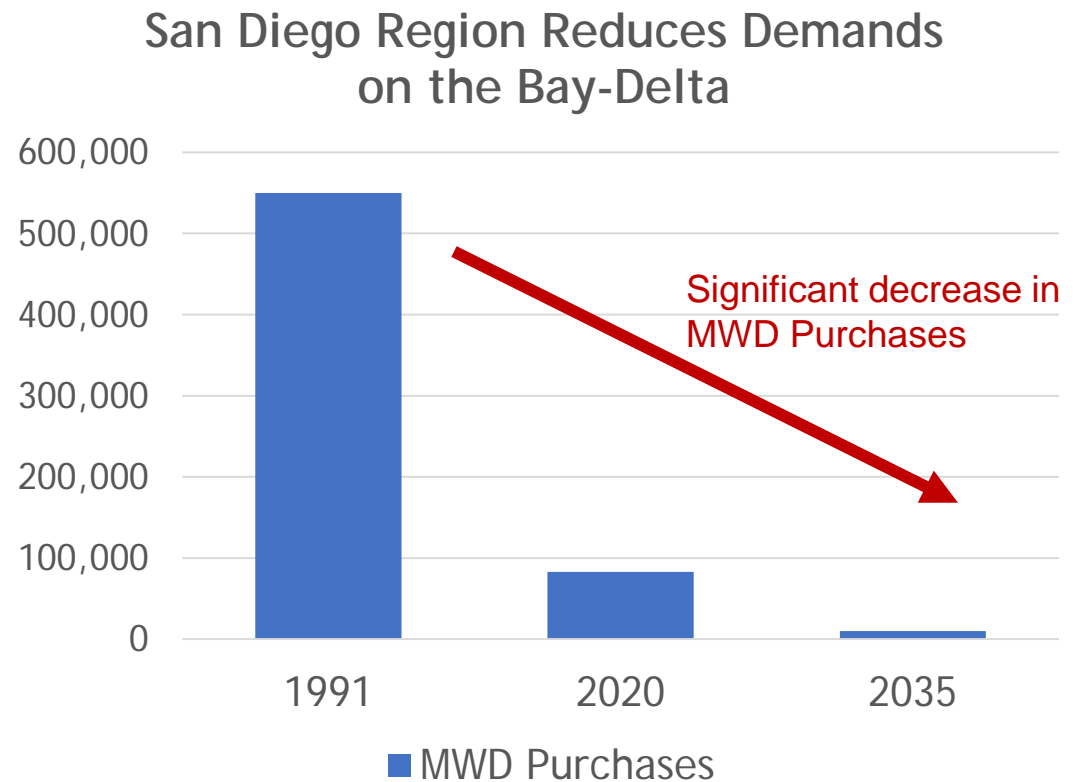
January 28, 2021

Amy Chen

Director of the MWD Program

Water Authority Bay-Delta Policy (2019)

- Support state policy to reduce reliance
- Water Resilience Portfolio approach, including single-tunnel Bay-Delta fix
- Conditioned on project costs being recovered through supply charges



Impacts on Bay-Delta Exports

2019 Delivery Capability Report (-125 TAFY)

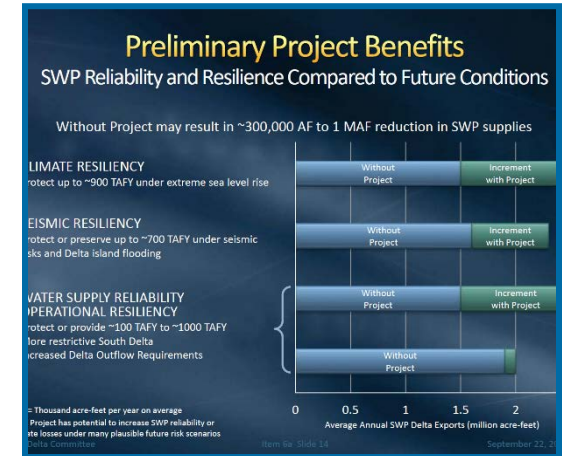
- 2018 COA Addendum: -115,000 AFY
- Oroville storage target: -61,000 AFY
- BiOps/ITP: +40,000 AFY
- Other modeling refinement: +11,000 AFY

State Board Process

- Bay-Delta Plan Update for Sacramento/Delta: **unknown**
- Potential Voluntary Agreements: **unknown**

Tunnel Project

- Supply benefit: **100,000 AFY to 1,000,000 AFY**



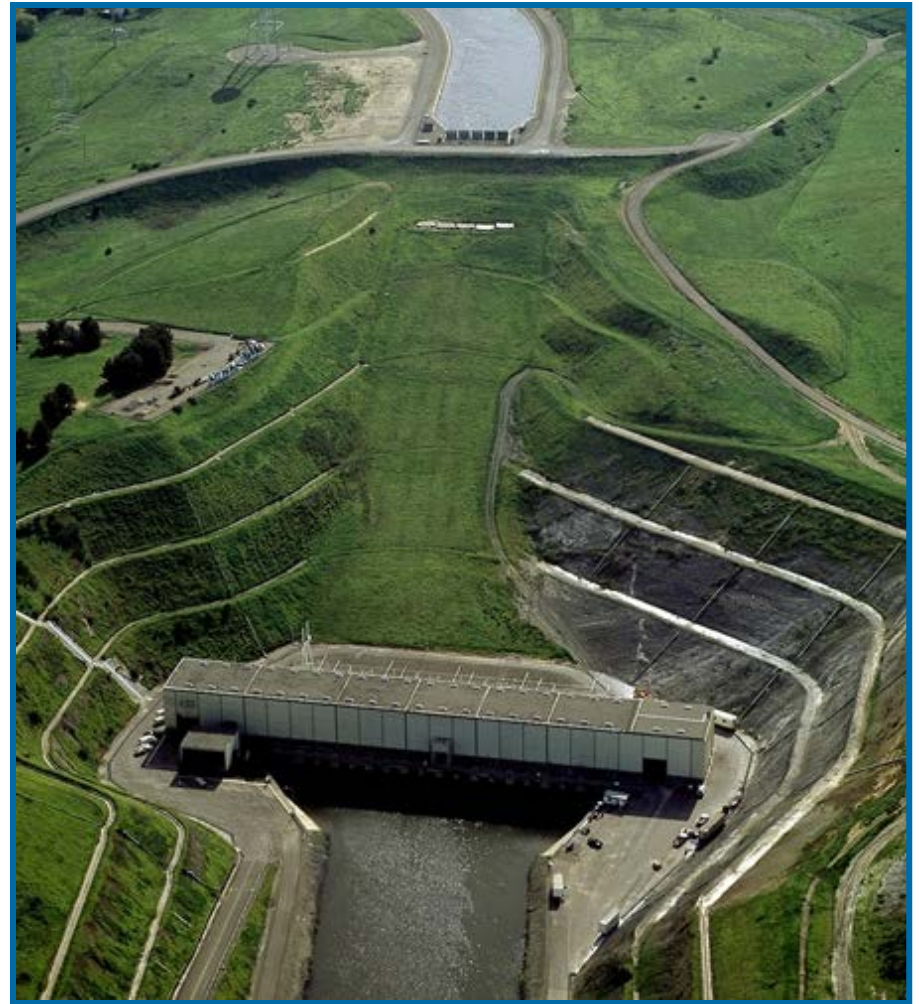
SWP Infrastructure Costs

- Repair and replacement for existing facilities
 - \$3.9 billion
- Subsidence
 - \$3-5 billion??
- Bay-Delta tunnel
 - \$15.9 billion (capital)



Single Tunnel Planning

- \$340.7 million planning costs over 4 years
- MWD Board approved funding 47.2%
 - \$160.8 million (\$58.9 million for 2021/2022)
- 13% funding gap
- Analysis of project benefits ongoing





**San Diego County
Water Authority**

Our Region's Trusted
Water Leader

Questions?